



Through connection block type BPP2- 5BU for rated voltage 500V



Through connection block type BPP2-5BU is a device designed for use in underground mining pits in non-explosive coal dust conditions and on the ground.

Through connection block type BPP2-5BU is designed for connecting and distributing power in mine three-phase grid with isolated star point transformer (IT system) for rated grid voltage of 500V.

Wires are connected to the block via clamps through cable glands.

TECHNICAL DATA:

ingress protection	IP54
insulation rated voltage of main circuits	660 V
rated power supply voltage	3x500V,50Hz,IT grid
rated current of the first three outlets	32 A
rated current of the fourth outlet	160, 250, 315 A
rated current of the fifth outlet	160, 250 A
dimensions	1300 x 900 x 370mm (H x W x D)
weight	90 kg

CONSTRUCTION

The through connection block is composed of a housing mounted on a frame construction, equipped with brackets. The frame construction allows the device to be hung on the pit wall or to be placed directly on the floor.

MODE OF OPERATION

In the main 3x500V circuit the through connection block is equipped with a three-position switches 1Q, 2Q: on-off-grounded. Control of the outlets is carried through drive levers of the switches.

The block's door can only be opened if both switches are in grounded position.

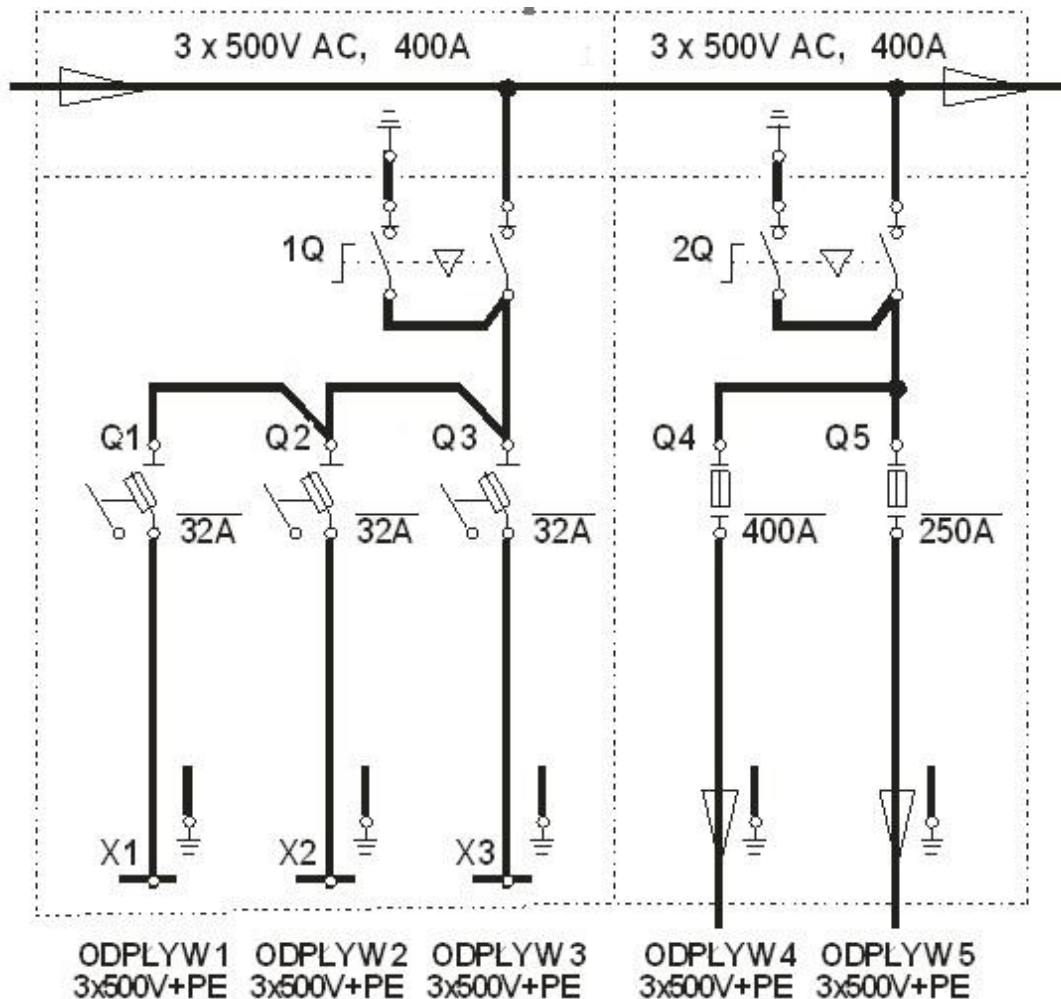
SCHEMATIC DIAGRAM

Legend:

Odplyw 1-5 - outlet 1-5

1Q, 2Q – switch disconnectors

Q1-Q5 – switch fuse disconnecter



Orders should be submitted in writing or by fax to the address:

 **Instal-Service PL**

Spółka z ograniczoną odpowiedzialnością
Spółka komandytowa

58-506 Jelenia Góra, ul. Wrocławska 15a

tel. (+48 075) 64-57-950

fax. (+48 075) 64-57-951

e-mai: instal@instal-service.pl