



Switchgear type RKS5-1/7

for rated voltage 500V



Switchgear type RKS5-1/7 is an electrical device designed for use in the underground mining pits in non-explosive conditions and on the ground.

Switchgear type RKS5-1/7 is designed for connecting and switching on receiver (especially to pump) in the 3-phase mine grid with insulated star point on the transformer (system IT) of rated grid voltage of 500V. Receiver can be connected to switchgear with buried stationary socket or terminal strip by cable entry. The switchgear is equipped with power protections against short-circuiting, overloading, control system of resistance to earth.

Switchgear RKS5-1/7 is equipped with electrically protected against short-circuiting, overloading, low insulation resistance (with automatic test of system) and control system of grounding integrity.

TECHNICAL DATA:

ingress protection	IP54
insulation rated voltage of main circuits	660 V
insulation rated voltage of auxiliary circuits	250 V
supply rated voltage	500V, 50 Hz
rated voltage of control circuits	24V, 50 Hz
maximum outlet load current	acc. to Tab.1
number of 500 V outlets	2
dimensions	1100 x 1000 x 370mm((height x width x depth)
weight	100kg

Table 1

Type of switchgear	Maximum outlet rated current [A]		Rated current of clamps from the supply side (Inz) [A]
	outlets		
	I (Power range 40-132 kW)	II (Power range 6,6-40 kW)	
RKS5-1/7	200	60	400

Note:

Ampacity of outlets can be adapted for the power of supplied receivers on request, however they can't exceed value in table 1.

CONSTRUCTION

The switchgear housing is made of steel sheets. The whole unit is based by a common support frame. The housing is equipped with brackets that allow for the switchgear to be hung on a chain or to be placed directly on the ground.

MODE OF OPERATION

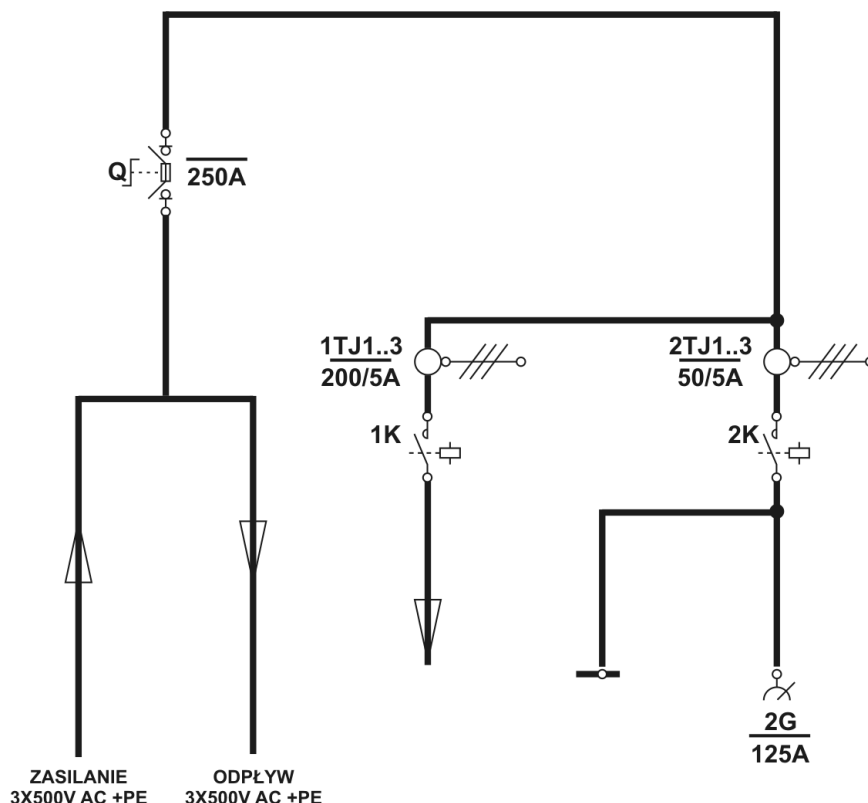
The control of 500 V outlets is carried out in three control mode: LOCAL, AUTOMATIC or REMOTE. It is possible to choose two ranges of power to wired receiver: 40-132kW and 6,6-40kW.

In LOCAL mode 500V outlets are turned on by the button on the face of switchgear. In AUTOMATIC mode contactor of outlet is turned on when the maximum level of water is reached. In REMOTE mode outlet is turned on with outside control system.

SCHEMATIC DIAGRAM

Legend:

zasilanie –supply
odpływ - outlet



Orders should be submitted in writing or by fax to the address:

 **Instal-Service PL**

Spółka z ograniczoną odpowiedzialnością
Spółka komandytowa

58-506 Jelenia Góra, ul. Wrocławska 15a
tel. (+48 075) 64-57-950
fax. (+48 075) 64-57-951
e-mai: instal@instal-service.pl