

Switchgear type RKS-1K/KP1/X

For rated voltage 500V



Switchgear type RKS5-1K/KP1/X is an electrical device designed for use in underground mining pits in non-explosive conditions and on the ground in non-explosive conditions.

Switchgear type RKS5-1K/KP1/X is designed for switching and connecting the receiver (especially of the screening grille of slag type KPZ-HMG) to the three-phase mine grid with isolated star point transformer (IT system) for rated grid voltage of 500V.

Switchgear type RKS5-1K/KP1/X is equipped with power protections against the effects of short-circuits and overloads.

TECHNICAL DATA:

ingress protection:	IP54
insulation rated voltage of main circuits:	660 V
insulation rated voltage of auxiliary circuits:	250V
rated power supply voltage:	500V, 50Hz
rated control unit voltage:	24V, 50Hz
capacity of outlets:	According to the table 1
number of 500V outlets:	1
dimensions:	900 x 500 x 370 mm (H x W x D)
weight:	45kg

Table 1

Switchgear Type	Ampacity of outlets	Rated Current of Clamps from Supply Side
RKS5-1K/KP1/X	25	32

Note:

Load drains of the outlets can be adapted to the power of the load on request, however they can't exceed the values in table 1.

CONSTRUCTION

Switchgear is composed of plate steel housing mounted on a support frame which allows the device to be hanged on a chain or placed on the ground.

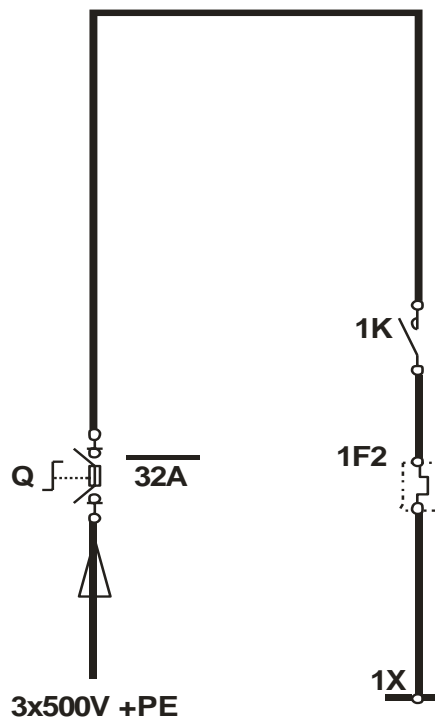
MODE OF OPERATION

The switchgear can operate in three control modes: LOCAL, REMOTE and RADIO. The control mode is selected by changing the position of the switch located on the face of the switchgear. In LOCAL mode, the outlets are turned on and off by the buttons on the face of the switchgear. In REMOTE mode receiver is turned on and off by the button placed on the face of the KS control cassette. RADIO mode enables turning the outlet on and off with a radio controller.

SCHEMATIC DIAGRAM

Legend:

- Q – fuse disconnector
- 1K – contactor
- 1F2 – overload protection



Orders should be submitted in writing or by fax to the address: